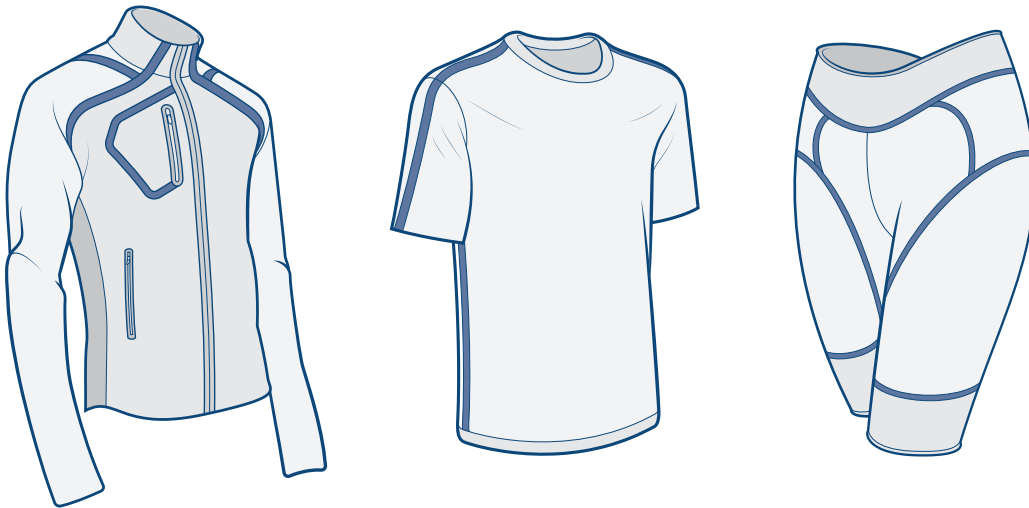


HEATHER

SEAM REINFORCEMENT TAPE

Why It's Worth a Look

- Incorporates a heather look for a classic sportswear feel
- High stretch
- Use for construction or aesthetic
- Reduces seam weight
- Strengthens seams
- Soft hand feel
- Withstands high heat wash



/ CORE COLORS

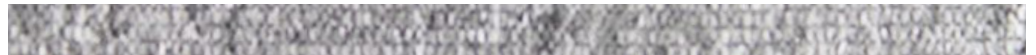


Grey

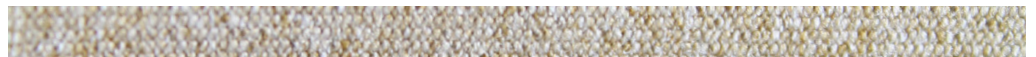
*Stocked in slit width of 10 mm



Navy



Black



Gold



Red

TECHNICAL INFORMATION

HEATHER SEAM REINFORCEMENT TAPE	HSRT4000
MATERIAL	Polyester/Spandex Knit Heather Fabric/Polyurethane Adhesive
STOCKED WIDTH	1372 mm
WEIGHT	3.75 g/m
HAND	Soft
WASH	Excellent at 60°C
MODULUS @ 50% ELONGATION ¹	2.0 lbf (0.9 kgf)
ADHESIVE SOFTENING POINT	95°C (203°F)
TOTAL THICKNESS	0.024" (0.61 mm)
ADHESIVE THICKNESS	0.004" (0.10 mm)
SERVICE TEMPERATURE	-30°C to 60°C (-22°F to 140°F)
INITIAL BONDING CONDITIONS²	
FLAT PRESS	
TEMPERATURE	115°C to 170°C
TIME	15 to 25 seconds
PRESSURE	2.8 to 4.2 bar (40 to 60 psi)

¹Modulus: The force required to pull a 12 mm (0.47") wide sample by specified gauge to 50% elongation at 508 mm (20") per minute after 3 cycles.

²Recommended bonding conditions will vary between different machinery and fabrics. The recommended conditions stated are a starting point only. Optimal bonding conditions should be established by the factory of the specific application.

NOTE: Seller hereby excludes any express warranties and the implied warranties of merchantability and fitness for a particular purpose. The following is made in lieu of any such "warranties." Bemis Associates, Inc. believes the information and specification supplied are reliable, but does not guarantee that any results shown or claimed will be obtained. Before using, the user shall determine the suitability and fitness of the product for its intended use. The user assumes all risks and liability whatever in connection with its own tests and use. Neither seller nor manufacturer shall be liable for any injury, loss or damage, direct or consequential, arising out of the use, or misuse or inability to use this product.